

Mapping of Urban Tanks / Rivers and Changes Tuni Urban Local Body, Anakapalli District, Andhra Pradesh

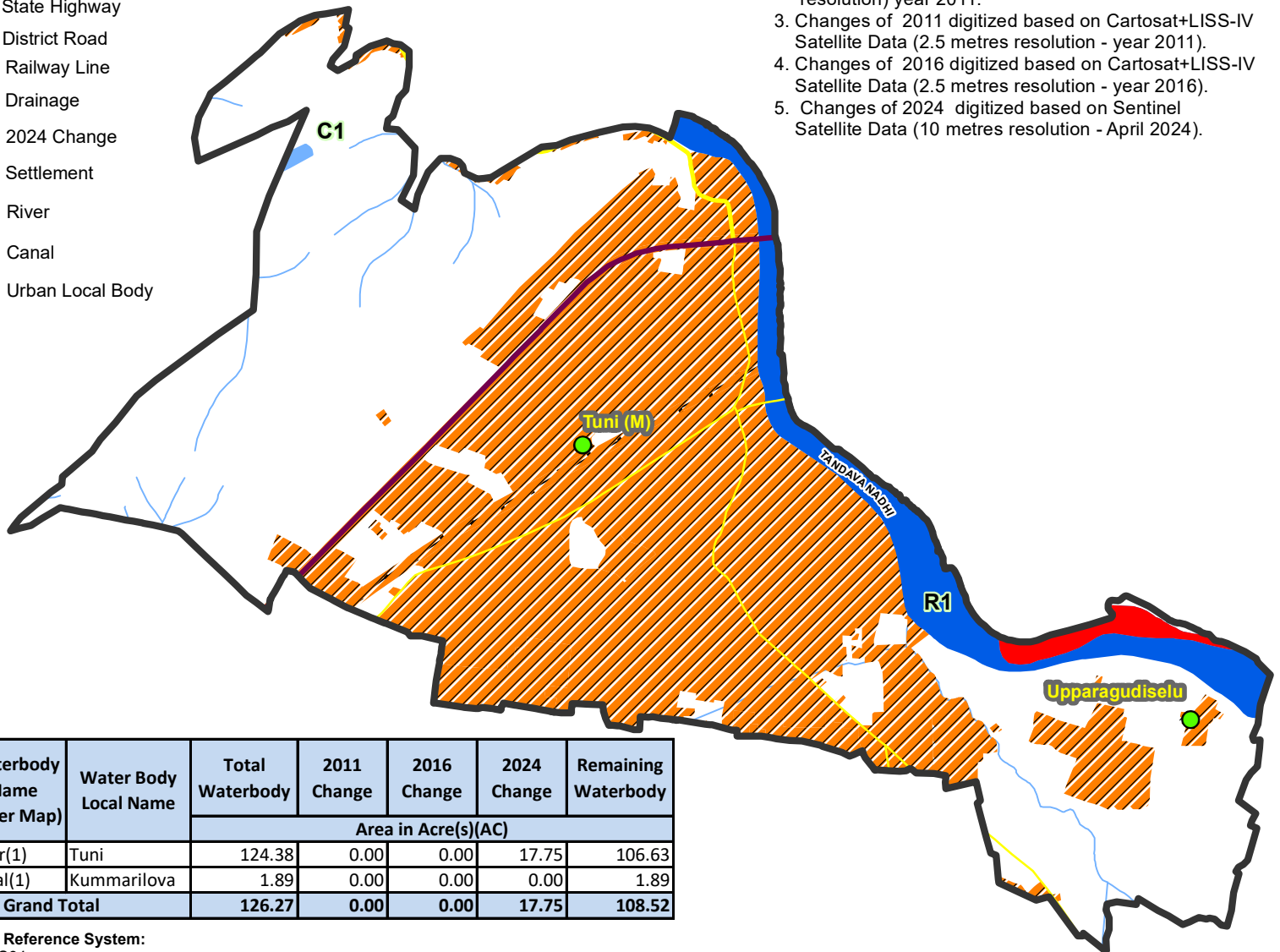


Legend

- Habitation
- National Highway
- State Highway
- District Road
- Railway Line
- Drainage
- 2024 Change
- Settlement
- R1 River
- C1 Canal
- Urban Local Body

Data Source:

1. Urban Local Body Boundary provided by the Commissioner and Director of Municipal Administration, GoAP.
2. Tank / Lake / River / Reservoir / Drainage / Canal boundary digitized based on Sol Topo-sheet and Cartosat+LISS-IV Satellite Data (2.5 metres resolution) year 2011.
3. Changes of 2011 digitized based on Cartosat+LISS-IV Satellite Data (2.5 metres resolution - year 2011).
4. Changes of 2016 digitized based on Cartosat+LISS-IV Satellite Data (2.5 metres resolution - year 2016).
5. Changes of 2024 digitized based on Sentinel Satellite Data (10 metres resolution - April 2024).



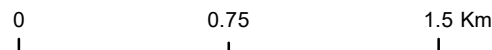
S.No	Waterbody Name (Refer Map)	Water Body Local Name	Total Waterbody	2011 Change	2016 Change	2024 Change	Remaining Waterbody
1	River(1)	Tuni	124.38	0.00	0.00	17.75	106.63
2	Canal(1)	Kummarilova	1.89	0.00	0.00	0.00	1.89
Grand Total			126.27	0.00	0.00	17.75	108.52

Coordinate Reference System:

Datum: WGS84

Projection: UTM Zone 44N

Note: This map and contents are required to be ground-truthed and vetted by the Collector and District Magistrate, Anakapalli District and the Stakeholder Departments.



Prepared By



Andhra Pradesh Space Applications Centre
ITE& C Department, Govt., of A.P.
Vijayawada - 520010